



# INJE

## NEW MEDICAL INSTRUMENTS

21c ECO-FRIENDLY COMPANY THAT PUTS THE CUSTOMER FIRST

**INJE**

#611, Shinil IT UT0, 13, LS-ro, Gunpo-si, Gyeonggi-do, Republic of Korea

Tel. +82-31-472-2803

Fax. +82-31-472-2808

Email. [inje@injemedi.co.kr](mailto:inje@injemedi.co.kr)

**INJE**

[www.injemedi.co.kr](http://www.injemedi.co.kr)



COMPANY  
INTRODUCE

# Challenge to world leading technology, INJE



Oil-Free Compressor



Sterilized-Water System



Portable Dental Unit

A highly Advanced Sterilizing System  
Dental Application Forms are not Regular Water  
Non-sterilized Neutral Function by Catalyst

Company  
Certificates



Product  
Certificates  
and Patents



Award



# MINIWINGS-1

PORTABLE DENTAL CURE DEVICE

Compressor + Suction + Watersystem + Scaler

## ALL-IN-ONE SYSTEM

How to use



Weight **18kg**

Light-weight!  
World's first Miniaturization

### PORTABLE DENTAL CARE DEVICE SPEC

- 4 functions including suction, scaler
- Easy water supply
- High and low speeds can be used with one handpiece
- Can perform surgery of long time
- Drain able during suction use
- Automatic suction discharge (With external suction container \*Option)
- High-performance micromotor
- 1:5 speed angle electric handpiece \*Option

### COMPONENTS

- |                                     |                                   |
|-------------------------------------|-----------------------------------|
| 1. 3-Way syringe (Water&Air)        | 5. Micromotor controller          |
| 2. Electric dental hand-piece motor | 6. Suction&Suction bottle (400mL) |
| 3. Electric medical scaler          | 7. Water supply bottle (500mL)    |
| 4. Foot switch                      | 8. Power plug                     |
- \* Additional option for electronic handpiece
- \* Additional option of 10L external suction container

### PRODUCT SPECIFICATION

Division	Content
Dimension	370(W)*220(D)*570(H)
Weight	18Kg
Voltage	220VAC 50/60Hz 200W
Electric Micromotor	ELEC 2 Mini Electric Motor RPM : min. 100 rpm (20:1 reduction angle) to max. 200,000 rpm (1:5 increasing angle) LED lamp : 33,000 lux
Pressure up to micromotor's tubing	Over 2 kgf/cm <sup>2</sup> of operating pressure up to the handpiece tubing of the micromoto
Ultrasonic waves scaler	Output range : 24 - 32KHz Water supply pressure : 1~3 bar
Syringe	Over 2 kgf/cm <sup>2</sup> of continuous operating pressure (tolerance: ±20%) Water flux : 1 L per minute within ±20%
Suction flux	Sucks 100 ml of distilled water within 60 seconds (tolerance: ±20%)
Suction pressure	Maximum vacuum -0.7 bar (tolerance: ±20%)
Noise	70 dB below



# IJ750G

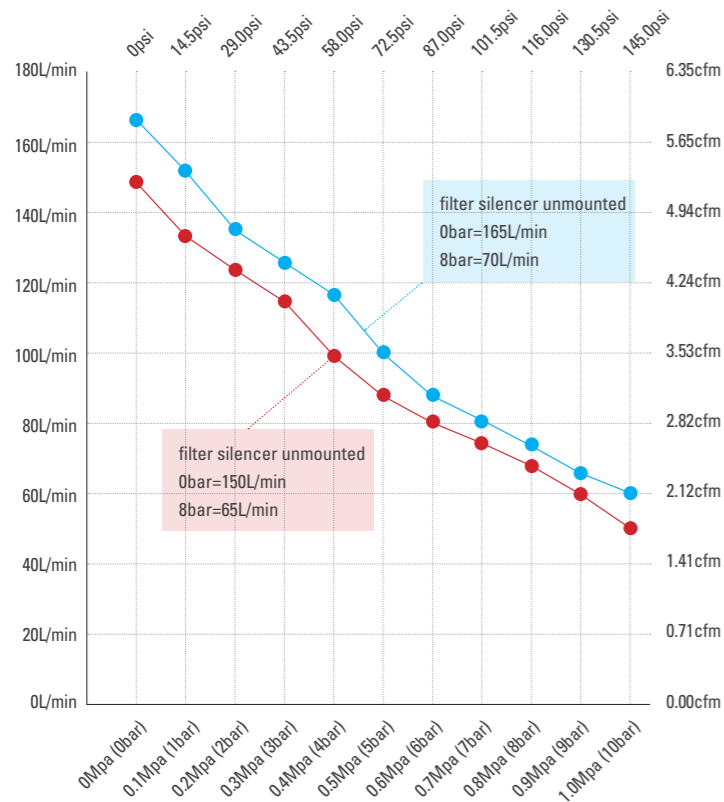
OIL-FREE AIR COMPRESSOR



Maintain temperature at long-term operation

Maximum **63±2°C**  
Open space environment 25~30C

## 750G MOTOR AIR OUTPUT



## FEATURE

Low-noise & Strong-power

CE & ISO certificate

Over-heating automatic power shut down  
{ Motor:135±5°C }

Thermal emission mold design  
{ Out-standing thermal efficiency }

## COMPRESSOR PERFORMANCE SPEC

- Oil-Free reciprocating method
- Air output: **165L/min (0.8Mpa=70L/min)**
- Recommended pressure: **0.6~0.8 Mpa**
- Maximum pressure: **1.0 Mpa**
- Rotation speed:**1740 RPM**
- Maximum vacuum: **-950 mbar**
- Power: **220V 60Hz&50Hz**
- Power Consumption: **800W**
- Current Consumption: **3.6A (Max 4.5A)**
- Condenser **28µf**
- Dimension: **259(W)×132(D)×207(H)**
- Weight: **11.5kg**
- Noise: **65dB**
- Thermostat: **135°C ± 5°C**
- Suction temperature condition: **2°C ~ 38 °C**

## IJCA-SERIES IJCA-CASE

2HP~4HP



## COMPRESSOR SPEC

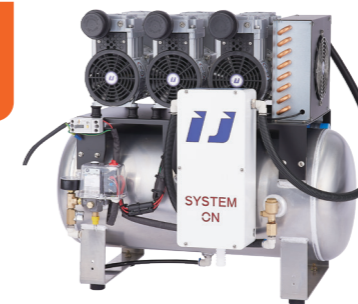
- Built-in air cooled circulation system
- Demension : 585(W) X 400(D) X 650(H)
- Weight : **2HP = 81.5kg**  
**3HP = 95kg**  
**4HP = 115.5kg**
- Noise : **55dB**
- Temperature display (Displays internal temperatures and enables temperature settings for emergency shutdown in the event of overheating)

## IJCA-DRY

- Drain condensate water sperated by centrifuge principlem, using differential pressure
- Air filter base element 5µm filter installation ( 0.01 µm option TBC )
- ※ Can choice IJCA-DRY unmounted option by customer request.

## IJCA-SERIES IJCA-3HP

For 5~6 Chairs



## COMPRESSOR SPEC

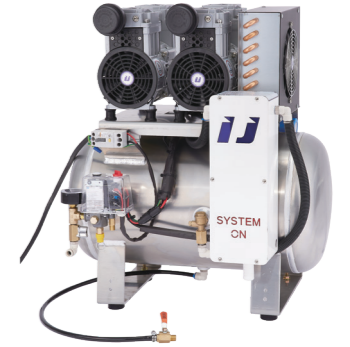
- Oil-Free reciprocating method
- Air Output: **420L/min (1Mpa=120L/min)**
- Set Control Pressure: **0.6~0.8 Mpa**
- Maximum Pressure: **1.0 Mpa**
- Rotation Speed: **1740 RPM**
- Tank Volume: **45L**
- Power: **220V 60Hz&50Hz**
- Power Consumption: **2400W**
- Current Consumption: **10.9A**
- Demension: **675(W) X 400(D) X 650(H)**
- Weight: **55kg**
- Noise: **68dB**

## IJCA-DRY

- Drain condensate water sperated by centrifuge principlem, using differential pressure
- Air filter base element 5µm filter installation ( 0.01 µm option TBC )
- ※ Can choice IJCA-DRY unmounted option by customer request.

## IJCA-SERIES IJCA-2HP

For 3~4 Chairs



## COMPRESSOR SPEC

- Oil-Free reciprocating method
- Air Output: **280L/min (1Mpa=80L/min)**
- Set Control Pressure: **0.6~0.8 Mpa**
- Maximum Pressure: **1.0 Mpa**
- Rotation Speed: **1740 RPM**
- Tank Volume: **35L**
- Power: **220V 60Hz&50Hz**
- Power Consumption: **1600W**
- Current Consumption: **7.2A**
- Demension: **535(W) X 400(D) X 650(H)**
- Weight: **38kg**
- Noise: **67dB**

## IJCA-DRY

- Drain condensate water sperated by centrifuge principlem, using differential pressure
- Air filter base element 5µm filter installation ( 0.01 µm option TBC )
- ※ Can choice IJCA-DRY unmounted option by customer request.

## IJCA-SERIES IJCA-4HP

For 7~8 Chairs



## COMPRESSOR SPEC

- Oil-Free reciprocating method
- Air Output: **560L/min (1Mpa=160L/min)**
- Set Control Pressure: **0.6~0.8 Mpa**
- Maximum Pressure: **1.0 Mpa**
- Rotation Speed: **1740 RPM**
- Tank Volume: **45L**
- Power: **220V 60Hz&50Hz**
- Power Consumption: **3200W**
- Current Consumption: **14.5A**
- Demension: **845(W) X 400(D) X 650(H)**
- Weight: **73kg**
- Noise: **69dB**

## IJCA-DRY

- Drain condensate water sperated by centrifuge principlem, using differential pressure
- Air filter base element 5µm filter installation ( 0.01 µm option TBC )
- ※ Can choice IJCA-DRY unmounted option by customer request.

# i-VAC

wet-suction



Strong vacuum power & Low-noise

For 3~4 Chair

For robust durability we use brass material to bottom case, and it has strong suction and flow rate through the INJE's out-standing separator structure technology.

## PUMP SYSTEM SPEC

• Power: 220V 60Hz&50Hz

• Power Consumption: 50Hz = 0.97kW (4.4A)

60Hz = 0.73kW (3.3A)

• Average vacuum: -450mmHg

• Drain volume: 50Hz = 335 ℓ/min

60Hz = 400 ℓ/min

• Rotation speed: 50Hz = 2850 RPM

60Hz = 3430 RPM

• Demension : 210(L) X 160(W) X 390(H)

• Weight : 20kg

• Noise : 60dB

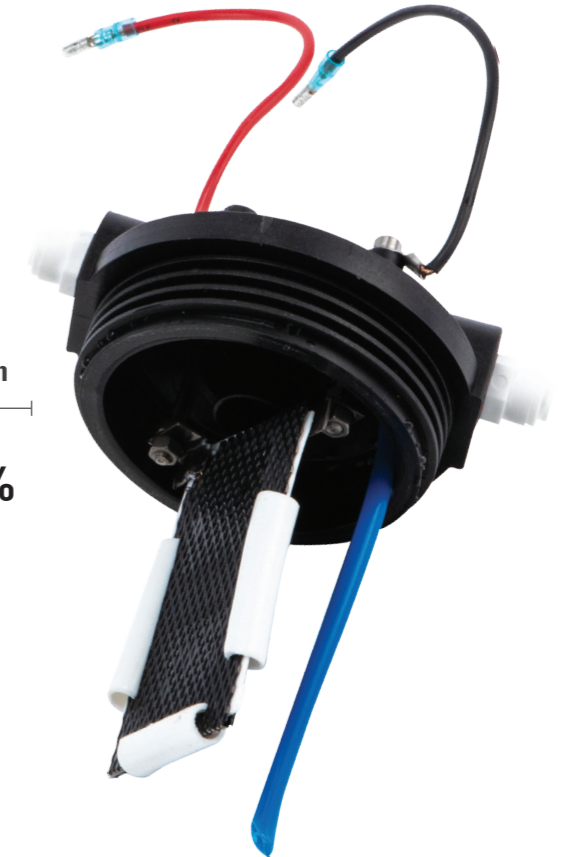
• Water pressure sensor & emergency switch

• Easy hose connection adapter

# PH-NEUTRAL MULTI-STERILIZING FUNCTIONAL WATER

Various, germs perfect sterilization

99.9%



## What is sterilizing functional water?

INJE's PH-neutral multi-sterilizing functional water is the one and only natural sterilizing functional water with strong sterilizing power, excellent safety, and eco-friendly elements created by using complex elements in water through special catalyst electrodes.

Tap water or underground water contains molecular substances such as O<sub>2</sub>, Co<sub>2</sub>, and CaCo<sub>3</sub> as well as H<sub>2</sub>O and anions such as Cl<sup>-</sup> and HCo<sub>3</sub>, and these substances are converted into neutral sterilizing functional water by the action of Energy and Catalyst in the Inje water-system.

**Quick and strong sterilization** although it is generated using complex elements in water without additives

- ↳ pH-neutral sterilizing water that's strong against various harmful bacteria
- ↳ Perfectly sterilize 99.9% of various bacteria harmful to humans including O-157 (food poisoning bacteria)
- ↳ Retains quick and powerful sterilizing power against staphylococcus aureus and MRSA
- ↳ Quickly sterilize various germs and fungus in only 5 to 30 seconds

**Safe and non-irritating** because it is generated using complex elements in water without additives

- ↳ After removing lime or harmful foreign substances in the water from the special catalyst electrode, it does auto-cleansing the electrode.
- ↳ Safe enough to meet drinking water standards as it is non-toxic, chemical-free sterilizing water
- ↳ No side effects even when used for a long time
- ↳ Non-toxic, chemical-free and non-irritating, providing convenient use as there's no need to wash it again with general water after sterilizing

**Environment-friendly** because it is generated using complex elements in water without additives

- ↳ Secondary pollution to the environment does not occur because it is returned to the original water state after sterilization
- ↳ No need to cleanse the pipes periodically with strong detergent because biofilm is remove or not generate, in the pipe.
- ↳ As it has sterilization, no biofilm is formed even at high temperatures, so warm water can be used



# LIFE WATER ALL-IN-ONE SYSTEM

Various, germs perfect sterilization

99.9%



**Application of electrode sterilization technology**  
Using the electrode potential difference and complex element action, it manufactures sterilization water with complex function



**Self-cleaning & draining**  
It automatically cleanses and discharges foreign substances sticking to the electrode such as lime



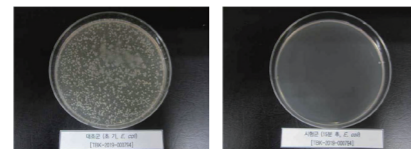
**Warm water supply**  
As there is no biofilm in the pipe, it can supply the temperature of warm water within 50°C even to chair instruments and can give stable treatment



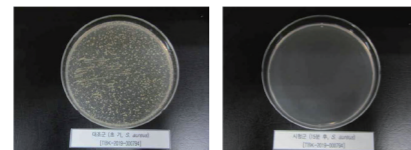
**Emergency water supply function**  
In case of emergency such as water outage in a building or inside, stable water supply is possible with the internal water pressure pump by connecting the emergency water supply hose to the water supply bottle

## POWERFUL STERILIZING POWER!

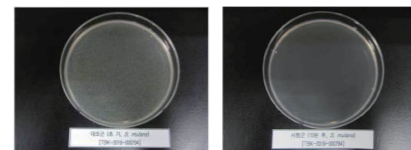
99.9% Powerful sterilization for various harmful germs



Control group (Early, E. coli) [TBK-2019-000794] Test group (15minutes later, E. coli) [TBK-2019-000794]



Control group (Early, S. aureus) [TBK-2019-000794] Test group (15minutes later, S. aureus) [TBK-2019-000794]



Control group (Early, S. mutans) [TBK-2019-000794] Test group (15minutes later, S. mutans) [TBK-2019-000794]



Sterilization Test report

## Sterilizing functional water S1 & S2

### FEATURE

- Dental neutral sterilizing functional water manufacturing equipment
- Can be applied to factory and various areas
- Sterilization by multi-component catalyst electrode, turgor pressure of potential difference
- Nontoxic, safe to use on human
- Real-time flow check Function (can check leak)
- No corrosion or bleaching of instruments
- Built-in electrode and filter that **do not use additives**
- **maximum to 50°C warm water supply adjustment function**
- Non-creation of biofilm inside the equipment
- No periodic pipe cleaning needed
- Emergency water supply function
- Auto electrode cleansing function
- Auto water pressure control function
- LED leak check function
- **Ultra pure water**(distilled water) production

### LIFEW-S1

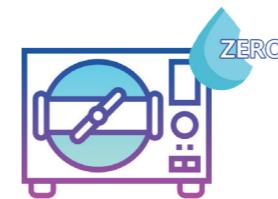
For Chairs : ~6  
Storage tank : 3.7ℓ  
Flow rate : 1ℓ/min (at 3 bar)  
Dimension : 400(L) X 400(W) X 740(H)  
Weight : 32kg

Built-in filter  
Special catalyst electrode 500mℓ  
SED Filter \* 2ea (replacement cycle 90day)  
UF Filter \* 1ea (replacement cycle 540day)  
Ultra pure water \* 1set (replacement cycle 365day)

### LIFEW-S2

For Chairs : ~10  
Storage tank : 6.2ℓ  
Flow rate : 2.2ℓ/min (at 3 bar)  
Dimension : 400(L) X 400(W) X 740(H)  
Weight : 40kg

Built-in filter  
Special catalyst electrode 1000mℓ  
SED Filter \* 3ea (replacement cycle 90day)  
UF Filter \* 1ea (replacement cycle 540day)  
Ultra pure water \* 1set (replacement cycle 365day)



Ultra pure water supply for autoclave



Dental Chair warm water supply



Instrument primary sterilization