



Dr's Light PRIME

Slim

&

Wide



Dual Wave

Next Level Tech
& Revolutionary Design



Dr's Light PRIME

-IC-WHCD100
-IC-DCDU75

-IC-WHT60 -IC-WHW61
-IC-DCAM70 -IC-DCAU71
-IC-EZAM80 -IC-EZAU81
-IC-WHMA90

-CL-DP40
-CL-DLT30
-CL-DL10
-CL-DC20

-AL-DFA20
-AL-DF10

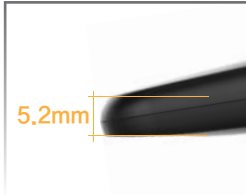
Slim & Wide

Next Level Tech & Revolutionary Design



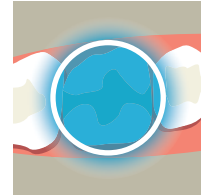
5.2mm slim head height

It is easily accessible anywhere in the oral cavity.



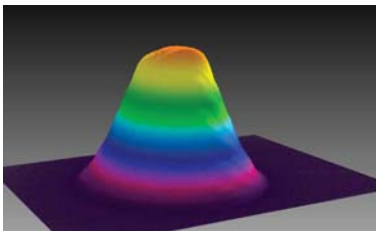
Wide irradiating surface with a diameter of 12mm

Polymerization is possible even on a wide posterior surface at once.



Uniform(Homogeneous) light and strong output

Uniform light is irradiated using 21 light emitting elements.



Fast polymerization

Fast polymerization is possible with strong output.



Dual wavelength LED

Can polymerize for any kinds of material with dual wavelength (peak 405 & 460nm).



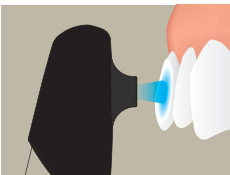
360° twistable head

Can approach any where in oral cavity.



M.A(Multi-purposed Attachment)

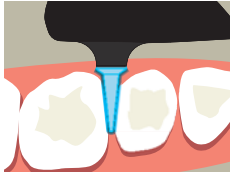
It can be used for various purposes depending on the circumstances.



When temporary polymerization is required due to point polymerization



When Root-canal polymerization is required



When proximal areas tooth polymerization is required



Auto on/off

Grip the device to turn it on, and release it to turn it off.



Use of interchangeable soft lenses

If the irradiation surface is damaged, it can be easily replaced.



Big capacity

High-quality, Big-capacity battery applied.



Color Touch LCD screen

It is easy to use by using the touch function.



Various curing mode(Ortho mode)

Six program modes that can be operated by touch are built-in.

