



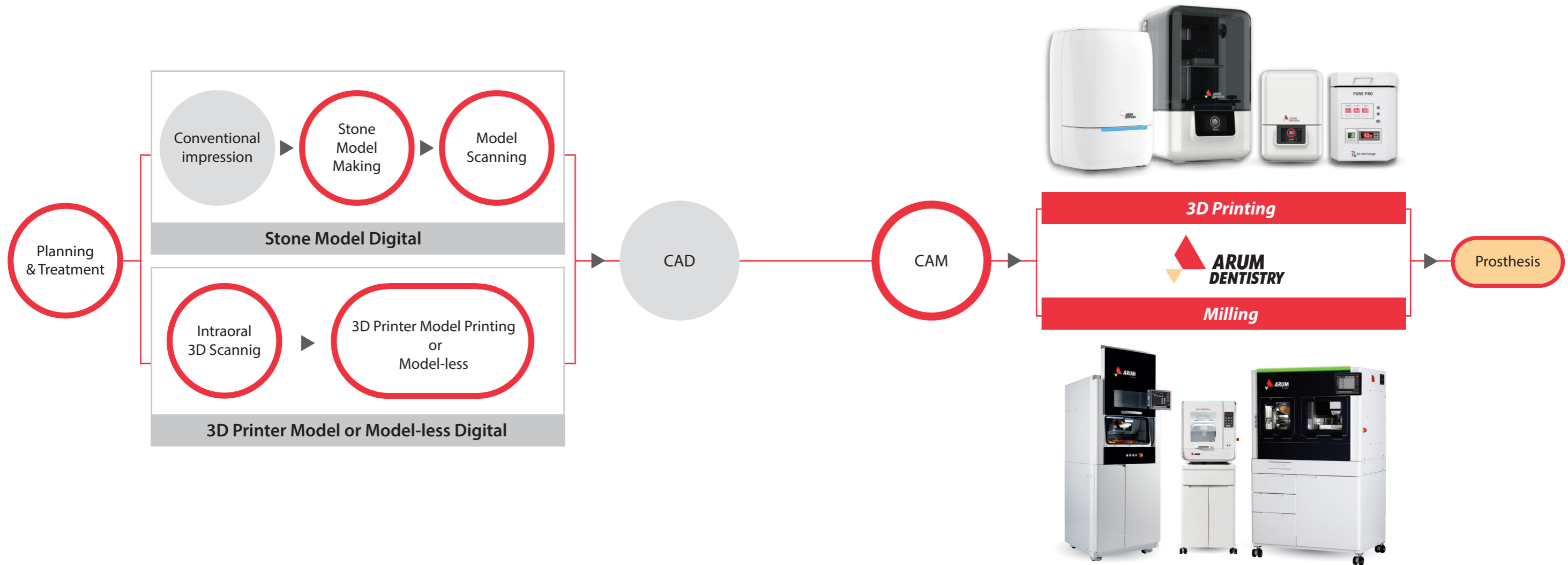
DIGITAL DENTISTRY SOLUTIONS

ARUM Digital Dentistry Workflow

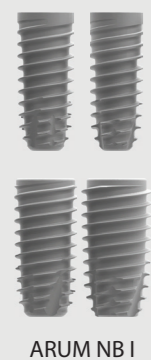
With use of products of Arum Dentistry from planning & treatment and CAD/CAM design to prosthesis production, Digital Dentistry becomes fun for you.

You can realize simple prosthesis production and prosthetic treatment using ARUM Digital Dentistry Solution that features: "Fixture Design (Patent No. 10-2118038)" allowing rapid formation of new bones by the distribution of the stress on the upper part of the fixture to prevent fracture and facilitate smooth blood flow in the screw part (Patent No.

10-2118038); "Excellent Machining Precision of CAD / CAM milling machine recognized in the world market over the last 20 years; "Accurate and Excellent Quality Dental Material" that went through total inspection process (Ti 6Al-4V ELI / stainless steel 303F); "Zirconia Block" boasting its strength and natural shade, and "3D Printer System"(Printer, UV curing machine, Resin) boasting its fast printing speed and accuracy, you can realize simple prosthesis production and prosthetic treatment.



Implant



Consumables



Lab Driver



CAM Program



CAD/CAM Materials



3D Printer Materials



ARUM Milling Machine Line-up



- Metal Disk
- Pre-milled Blank
- Zirconia Block

Model	5X-200	5X-500L	5X-500	5X-450	4X-450	
Axis	5 Axis	5 Axis	5 Axis	5 Axis	4 Axis	
Processing	Wet and Dry	Wet and Dry	Wet and Dry	Wet and Dry	Wet	
Max. RPM	60,000	60,000	60,000	60,000	50,000	
Spindle Power	DC 3.0kw	AC 2.2kw	AC 2.2kw	AC 1.28kw	AC 1.8kw	
A.T.C	15	20	20	15	6	
Tool Shank (mm)	Ø6	Ø6	Ø6	Ø6	Ø6	
Motor	Servo	Servo	Servo	Stepping	Stepping	
Drive Mechanism	Ball Screw	Ball Screw	Ball Screw	Ball Screw	Ball Screw	
Way System	Linear Guide	Linear Guide	Linear Guide	Linear Guide	Linear Guide	
Total Size (W*D*H)	800*950*1760mm	1100*910*1735mm	710*910*1695mm	790*790*1645mm	790*790*1645mm	
Weight (Machine / Table)	270kg / 135kg	330kg / 87kg	230kg / 65kg	185kg / 65kg	185kg / 65kg	
Travel	X,Y,Z axis	330*146*145mm	228*128*130mm	228*128*130mm	245*116*130mm	245*116*130mm
	A / B axis	360° / ±30°	360° / ±30°	360° / ±30°	360° / ±35°	360° / -
Disk Jig or Cartridge Type	O type	O type, C type	O type, C type	C type	-	
Number of Jig	-	12	-	-	-	
Jig exchange	-	Auto	-	-	-	
Materials						
Pre-milled Blank (Titanium)	◎ (5ea)	◎ (10ea)	◎ (10ea)	◎ (5ea)	◎ (10ea)	
Co-Cr & Ni-Cr Disk	◎	○	○	X	X	
Titanium Disk	◎	◎	◎	○	X	
Lithium Disilicate	○	○	○	○	X	
Nanocomposite	◎	◎	◎	◎	X	
Zirconia	◎	◎	◎	◎	X	
PMMA	◎	◎	◎	◎	X	
PEEK	◎	◎	◎	◎	X	
Wax	◎	◎	◎	◎	X	
Applications						
Implant Bar	◎	◎	◎	◎	X	
Screw-Retained Bridge	◎	◎	◎	◎	X	
Customized Abutment	◎	◎	◎	◎	◎	
Hybrid Abutment	◎	◎	◎	◎	X	
Inlay & Onlay	◎	◎	◎	◎	X	
Crown & Coping	◎	◎	◎	◎	X	
Crown & Coping Bridge	◎	◎	◎	◎	X	
Model	◎	◎	◎	◎	X	
Bite Splint	◎	◎	◎	◎	X	
Denture	◎	◎	◎	◎	X	
Page	8-11p	12-15p		16-19p		



Model	4X-100	5X-400	5X-300 Pro	5X-300D	4X-300	4X-300D
Axis	4 Axis	5 Axis	5 Axis	5 Axis	4 Axis	4 Axis
Processing	Wet and Dry	Wet and Dry	Wet and Dry	Dry	Wet and Dry	Dry
Max. RPM	50,000	80,000	80,000	60,000	80,000	60,000
Spindle Power	AC 1.8kw	AC 0.5kw	AC 0.5kw	AC 0.5kw	AC 0.5kw	AC 0.5kw
A.T.C	8	10	12	12	12	12
Tool Shank (mm)	Ø6	Ø4	Ø4	Ø4	Ø4	Ø4
Motor	Servo	Stepping	Stepping	Stepping	Stepping	Stepping
Drive Mechanism	Ball Screw	Ball Screw	Ball Screw	Ball Screw	Ball Screw	Ball Screw
Way System	Linear Guide	Linear Guide	Linear Guide	Linear Guide	Linear Guide	Linear Guide
Total Size (W*D*H)	710*890*1750mm	570*655*1625mm	570*620*1580mm	570*620*640mm	570*620*1580mm	570*620*640mm
Weight (Machine / Table)	210kg / 82kg	100kg / 65kg	90kg / 65kg	90kg / -	90kg / 65kg	90kg / -
Travel	250*116*110mm	145*110*85mm	159*120*90mm	159*120*90mm	159*120*90mm	159*120*90mm
	- / 360°	±35° / 360°	±30° / 360°	±30° / 360°	360° / -	360° / -
Disk Jig or Cartridge Type	O type	O type	C type	C type	-	-
Number of Jig	-	-	-	-	-	-
Jig exchange	-	-	-	-	-	-
Materials						
Pre-milled Blank (Titanium)	◎ (10ea)	○ (2ea)	X	X	X	X
Co-Cr & Ni-Cr Disk	X	X	X	X	X	X
Titanium Disk	X	X	X	X	X	X
Lithium Disilicate	○ (T Jig X)	◎	◎	X	◎	X
Nanocomposite	◎ (T Jig X)	◎	◎	◎	◎	◎
Zirconia	◎ (T Jig X)	◎	◎	◎	◎	◎
PMMA	◎ (T Jig X)	◎	◎	◎	◎	◎
PEEK	◎ (T Jig X)	◎	◎	◎	◎	◎
Wax	◎ (T Jig X)	◎	◎	◎	◎	◎
Applications						
Implant Bar	X	X	X	X	X	X
Screw-Retained Bridge	X	X	X	X	X	X
Customized Abutment	◎ (T Jig ◎)	○	X	X	X	X
Hybrid Abutment	○ (T Jig X)	◎	◎	◎	○	○
Inlay & Onlay	○ (T Jig X)	◎	◎	◎	○	○
Crown & Coping	○ (T Jig X)	◎	◎	◎	○	○
Crown & Coping Bridge	○ (T Jig X)	◎	◎	◎	X	X
Model	X	◎	◎	◎	X	X
Bite Splint	X	◎	◎	◎	X	X
Denture	X	○	◎	◎	X	X
Page	20-21P	22-25P	26-29P	30-33P		

* Products are subject to change without notice to improve quality, function, design or otherwise. / ◎: High Compatibility / ○: Compatibility / X: Non-Compatibility

ARUM 5X-300 Pro Bright Future, Right System



Efficient C-TYPE JIG

Labial (or Buccal) side texture and undercut area precision processing minimize post-processing time.



Easy and easy material change

You can easily exchange from disk to CAD block as it uses cartridge type materials.

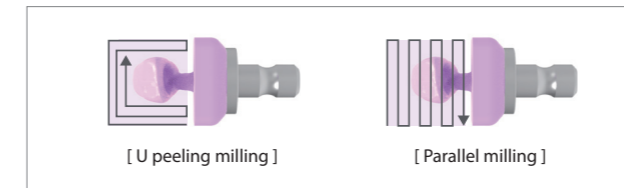


All in One System

An external compressor is not required, and all additional devices (Dust Collector, Coolant System) are built inside the table to overcome installation space constraint and minimize noise. ** German Renfert SILENT compact CAM model is used (optional)

High speed 80,000 RPM







By choosing one from 2 modes of roughing process (U peeling milling, and Parallel milling), you can process glass ceramic materials more effectively.



Excellent detail expression

Through groove, labial side texture precision processing using ARUM's exclusive 0.3mm tool for Zirconia, you can process prostheses close to natural teeth.



RPM 80,000
 Wet
  Dry
  Labial
  Zirconia
  CAD Block
  5Axis



Zirconia Crown



Zirconia Hybrid Abutment



Crown & Coping Bridge

Materials & Applications Info.

Materials		Applications	
Pre-milled Blank (Titanium)	X	Implant Bar	X
Co-Cr & Ni-Cr Disk	X	Screw-Retained Bridge (Crown & Coping)	X
Titanium Disk	X	Customized Abutment	X
Lithium Disilicate	⊙	Hybrid Abutment	⊙
Nanocomposite	⊙	Inlay & Onlay	⊙
Zirconia	⊙	Crown & Coping	⊙
PMMA	⊙	Crown & Coping Bridge	⊙
PEEK	⊙	Model	⊙
Wax	⊙	Bite Splint	⊙
		Denture	⊙

⊙: High Compatibility / ○: Compatibility / X: Non-Compatibility

Specifications

Axis	5-Axis	Drive Mechanism	Ball Screw
Processing	Wet and Dry	Way System	Linear Guide
Spindle Power	AC 0.5kw	Machine Size (W*D*H)	570*620*640mm
Max. RPM	80,000	Total Size (W*D*H)	570*620*1580mm
A.T.C	12	Weight (Machine / Table)	90kg / 65kg
Tool Shank (mm)	Ø4	Travel	X,Y,Z axis
Motor	Stepping		A / B axis
			±30° / 360°

* Products are subject to change without notice to improve quality, function, design or otherwise.

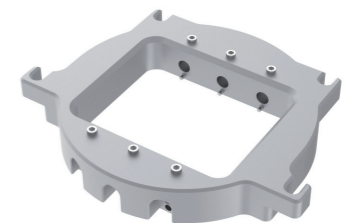
Tool List

	Code	Size	Code	Size
Basic	ZB-46	D2*L18*50	PB-51	D1.0*L10*44
	ZB-47	D1.0*L16*50	DG-52	D2.5*L13*44.5
	ZB-48	D0.6*L10*45	DG-53	D1.5*L10*44.5
	ZB-65	D0.3*L10*45	DG-54	D1.0*L10*44.5
	PB-49	D2*L18*50	DG-55	D0.6*L8*41
	PB-50	D1.5*L14*47		
Special	Code	Size	Code	Size
	MOB-56	D3.0*L20*50	ZF-75	D0.6*L8*45
	ZF-70	D1.7*L18*50	TC-80	D1.8*L08*45

Accessories



C Type Cartridge



CAD Block Cartridge

ARUM DENTISTRY Co., Ltd.

23, Gukjegwahak 11-ro, Yuseong-gu, Daejeon, Republic of Korea, 34002

E-mail. info@arumdentistry.com Tel. +82-42-935-3644 #1 Fax. +82-42-935-3645